



U.S. CHAMBER OF COMMERCE FOUNDATION

Workforce Summit

*Cullman • DeKalb • Jackson • Limestone •
Madison • Marshall • Morgan counties*



The U.S. at a Glance

- Without a high-quality early childhood intervention, an at-risk child is 25% more likely to drop out of school.
- As few as 25% of students taking the ACT college admissions tests produce college-ready scores in English, mathematics, reading, and science.
- Even the highest academic achieving states can't boast more than 60% of its students reaching proficiency levels in mathematics and reading. The national average for 8th grade math proficiency is a disappointing 34%.
- In some states, high school graduation rates for African-American and Hispanic students are less than 60%.



- A recent survey found that 92% of executives believe there is a serious gap in workforce skills, and nearly 50% are struggling to fill jobs.
- While 40% of U.S. employers struggle to fill more than 5 million open jobs, 6 million young adults are neither working nor in school.
- If left unaddressed, the skills gap could cause more than 5 million positions to go unfilled by 2020.
- Employers invest almost \$600 billion annually on training, overwhelmingly focused on upgrading the skills of their existing employees. That figure dwarfs the approximately \$16 billion spent on federal job training programs.



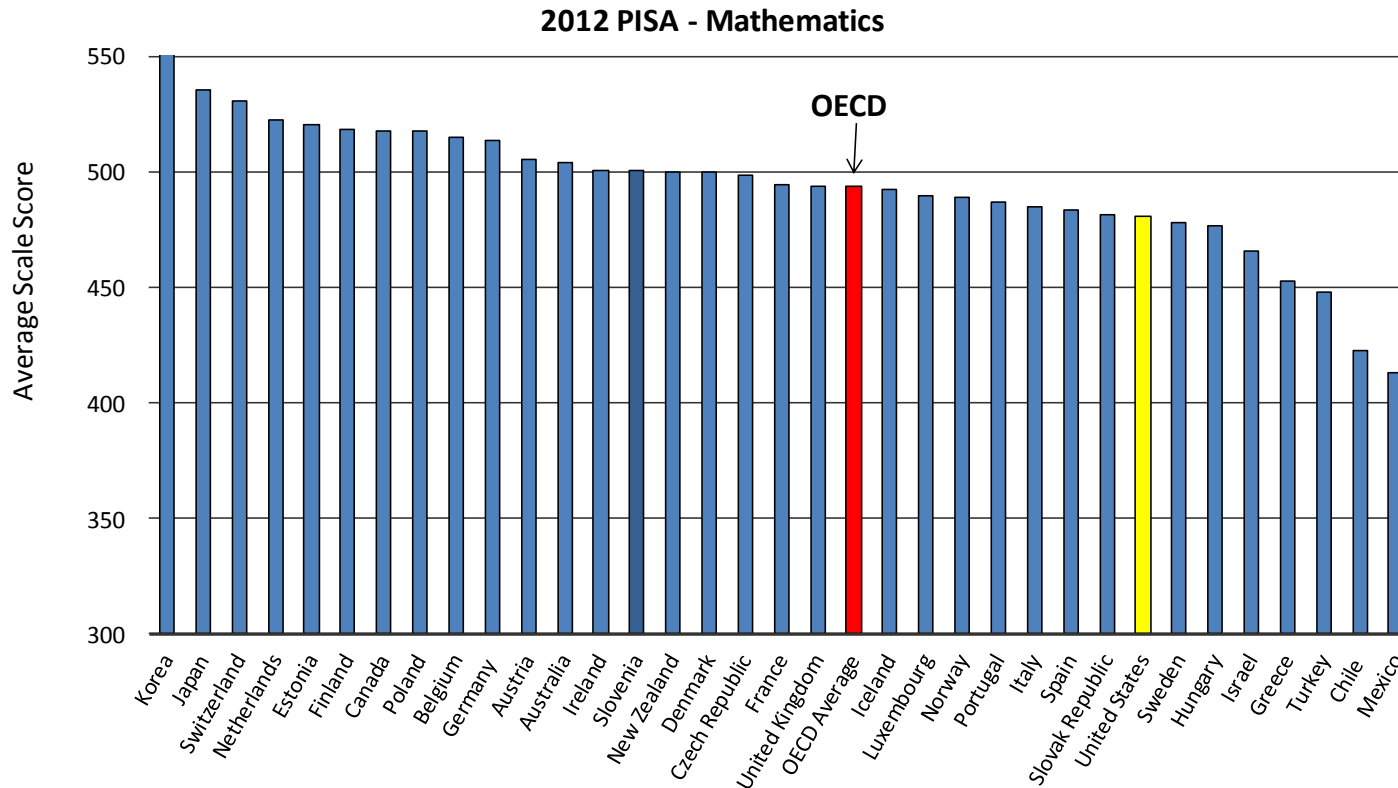
U.S. CHAMBER OF COMMERCE FOUNDATION

**How does the U.S. measure up
to our global competitors these days?**





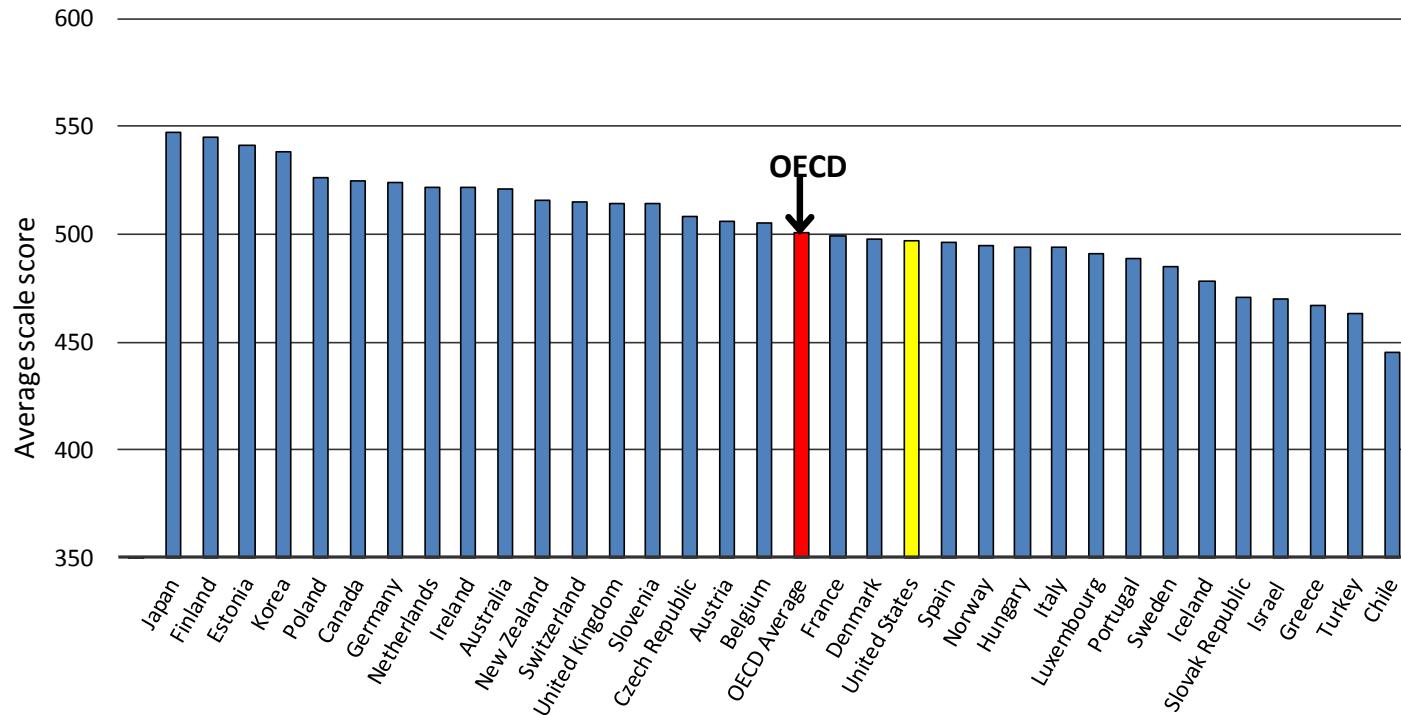
Of 34 OECD Countries, U.S. Ranks 26th in Mathematics





Of 34 OECD Countries, U.S. Ranks 21st in Science

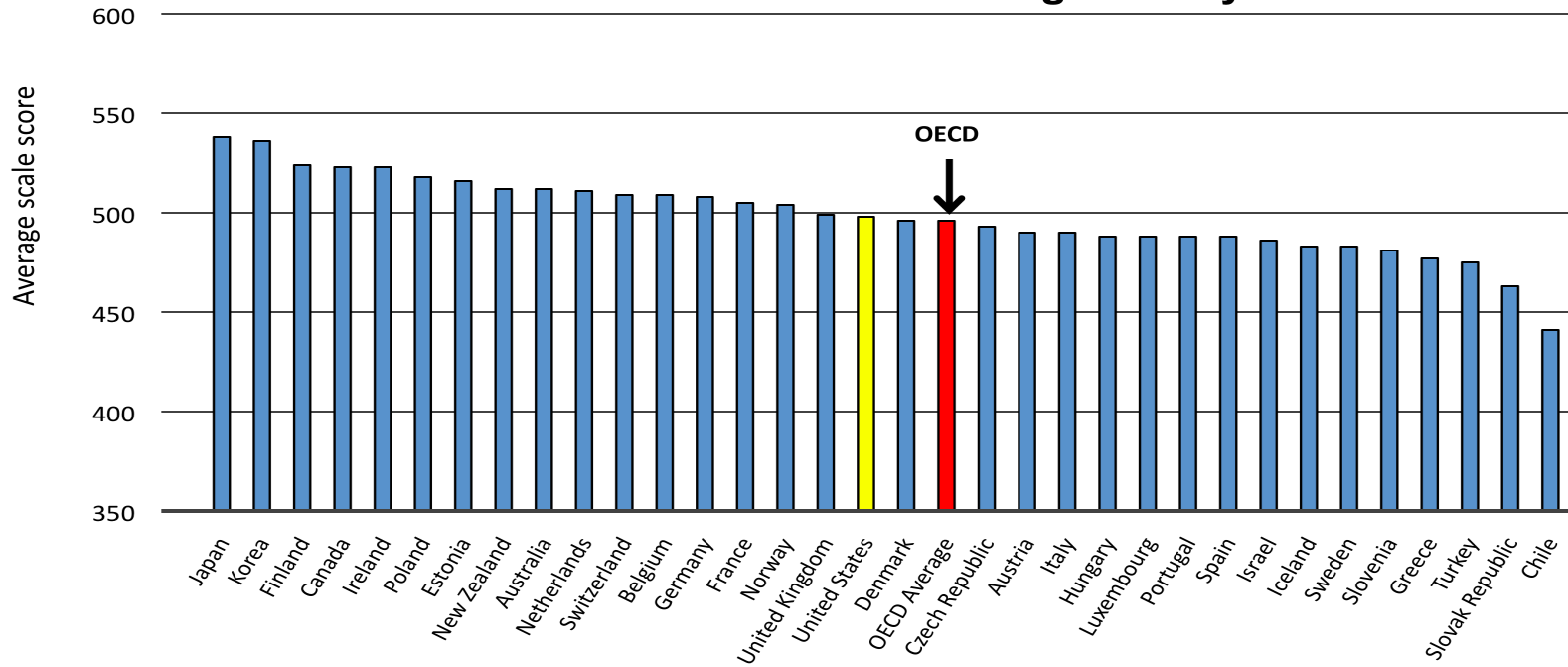
2012 PISA - Science





Of 34 OECD Countries, U.S. Ranks 17th in Reading Literacy

2012 PISA - Reading Literacy

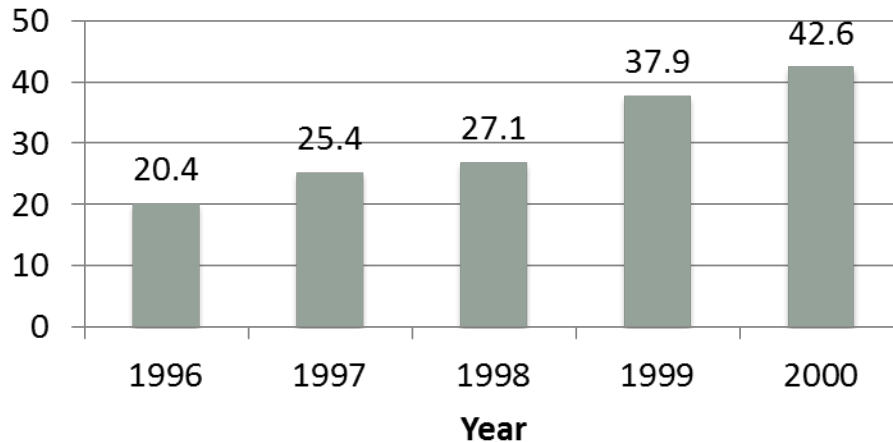




PISA Mathematics

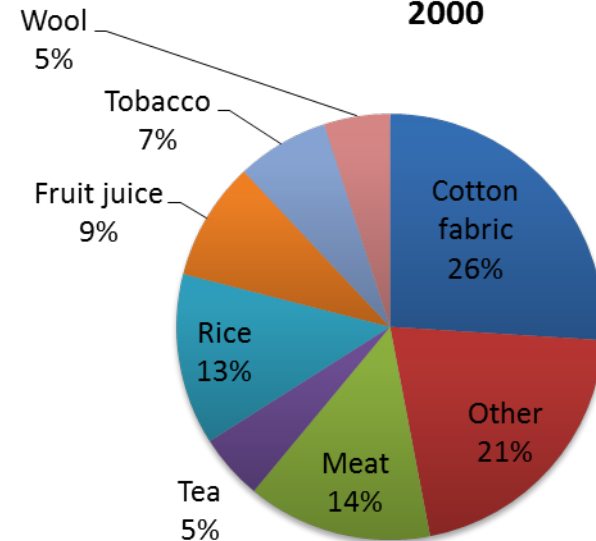
The graphics below show information about exports from Zedland, a country that uses zeds as its currency.

Total annual exports from Zedland in millions of zeds, 1996 to 2000



What was the total value (in millions of zeds) of exports from Zedland in 1998?

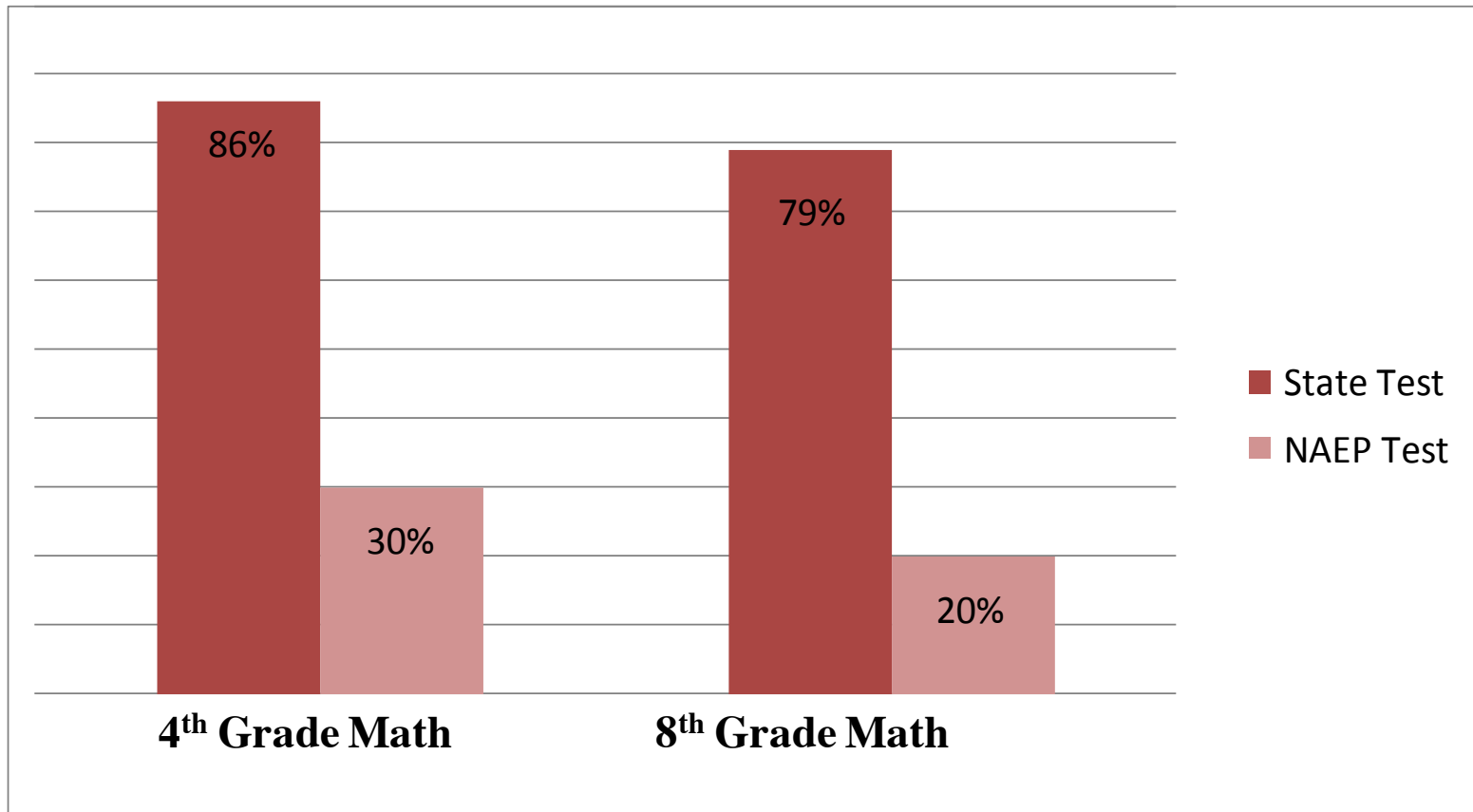
Distribution of exports from Zedland in 2000





The Honesty Gap

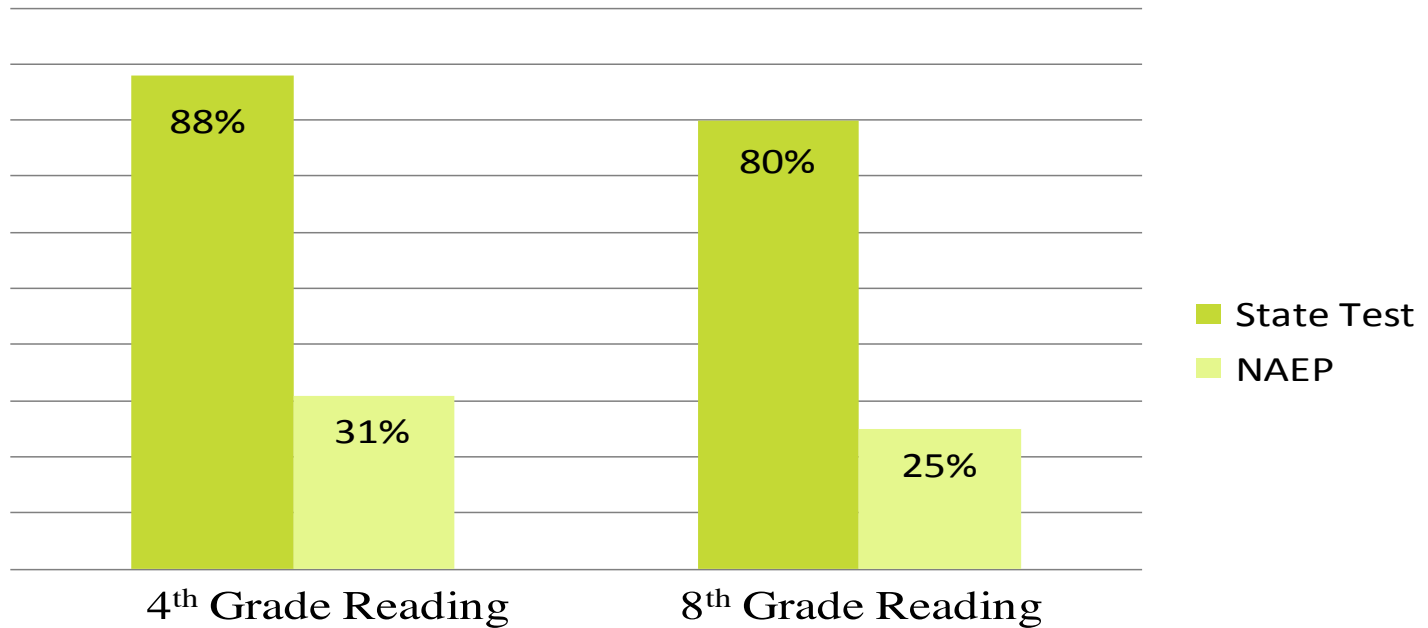
Alabama's 4th and 8th Grade Math Proficiency: 2012 – 2013





The Honesty Gap

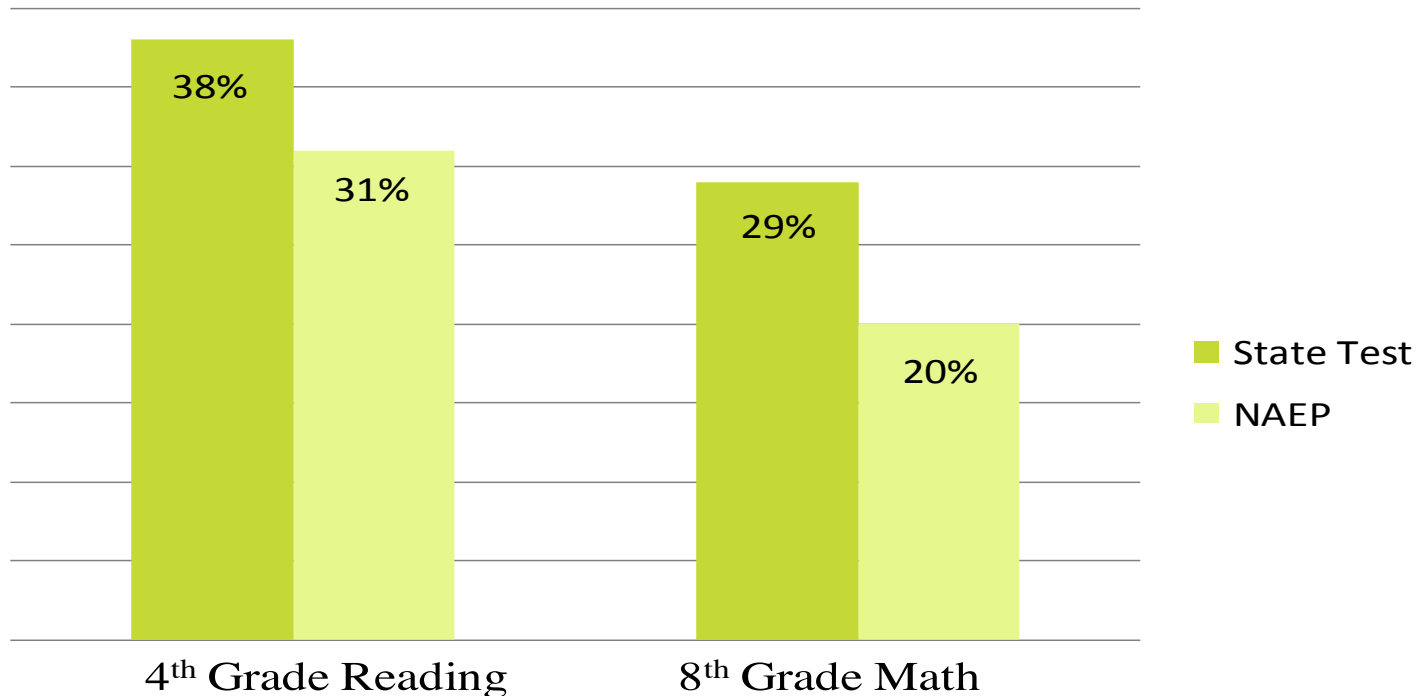
Alabama's 4th and 8th Grade Reading Proficiency: 2012 - 2013





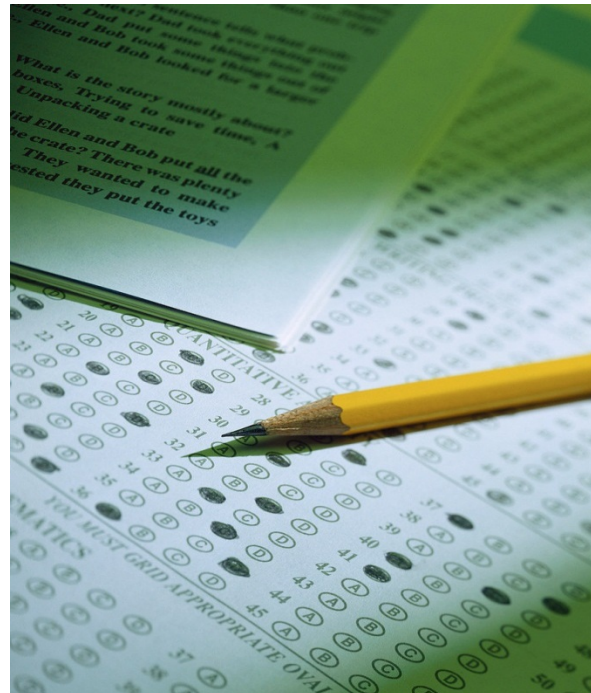
The Honesty Gap – Progress!

Alabama's 4th and 8th Grade Proficiency: 2014 - 2015





New Standards/ New Assessments





Old Assessments (Grade 10 ELA)

The cafeteria supervisor in your school is considering adding new, healthier options to the school lunch menu. Write a letter to the cafeteria supervisor suggesting at least three new additions to the menu. In your letter, explain the benefits of including your options on the new menu.



SAMPLE ITEM

STUDENT DIRECTIONS

You have read three texts describing Amelia Earhart. All three include the claim that Earhart was a brave, courageous person. The three texts are:

- “Biography of Amelia Earhart”
- “Earhart’s Final Resting Place Believed Found”
- “Amelia Earhart’s Life and Disappearance”

Consider the argument each author uses to demonstrate Earhart’s bravery.

Write an essay that analyzes the strength of the arguments about Earhart’s bravery in at least two of the texts. Remember to use textual evidence to support your ideas.



32%

50%

$58\% - 32\% = 26\%$



U.S. CHAMBER OF COMMERCE FOUNDATION





What Business Leaders Can Do for K-12?

- Know your what your state is up to
- Advocate for high-quality standards and aligned assessments
- Prepare the public for an anticipated drop in test scores
- Engage in the public dialogue via social media, op-eds
- Form partnerships between business and education to help students and parents know what it takes to be career ready
- Develop informational tools and resources to educate business leaders in your state ... or steal/modify ours
- If interested in support, contact USCCF



Workforce Development

5.5%

12.2%



Search ID: grin1497

“There’s an apprenticeship opportunity on TV tonight.”



Talent Pipeline Management

Strategy 1: Organize and Launch Employer Collaboratives

Strategy 2: Engage in Demand Planning

Strategy 3: Communicate Competency and Credentialing
Requirements

Strategy 4: Talent Flow Analysis

Strategy 5: Develop Employer Measures

Strategy 6: Aligning Public and Private Incentives



U.S. CHAMBER OF COMMERCE FOUNDATION

Questions?



Contact Information:

Jaimie Francis

Senior Manager, Programs and Operations

U.S. Chamber of Commerce Foundation

1615 H Street NW

Washington, DC 20062

Phone: 202-463-5903

Email: jfrancis@uschamber.com